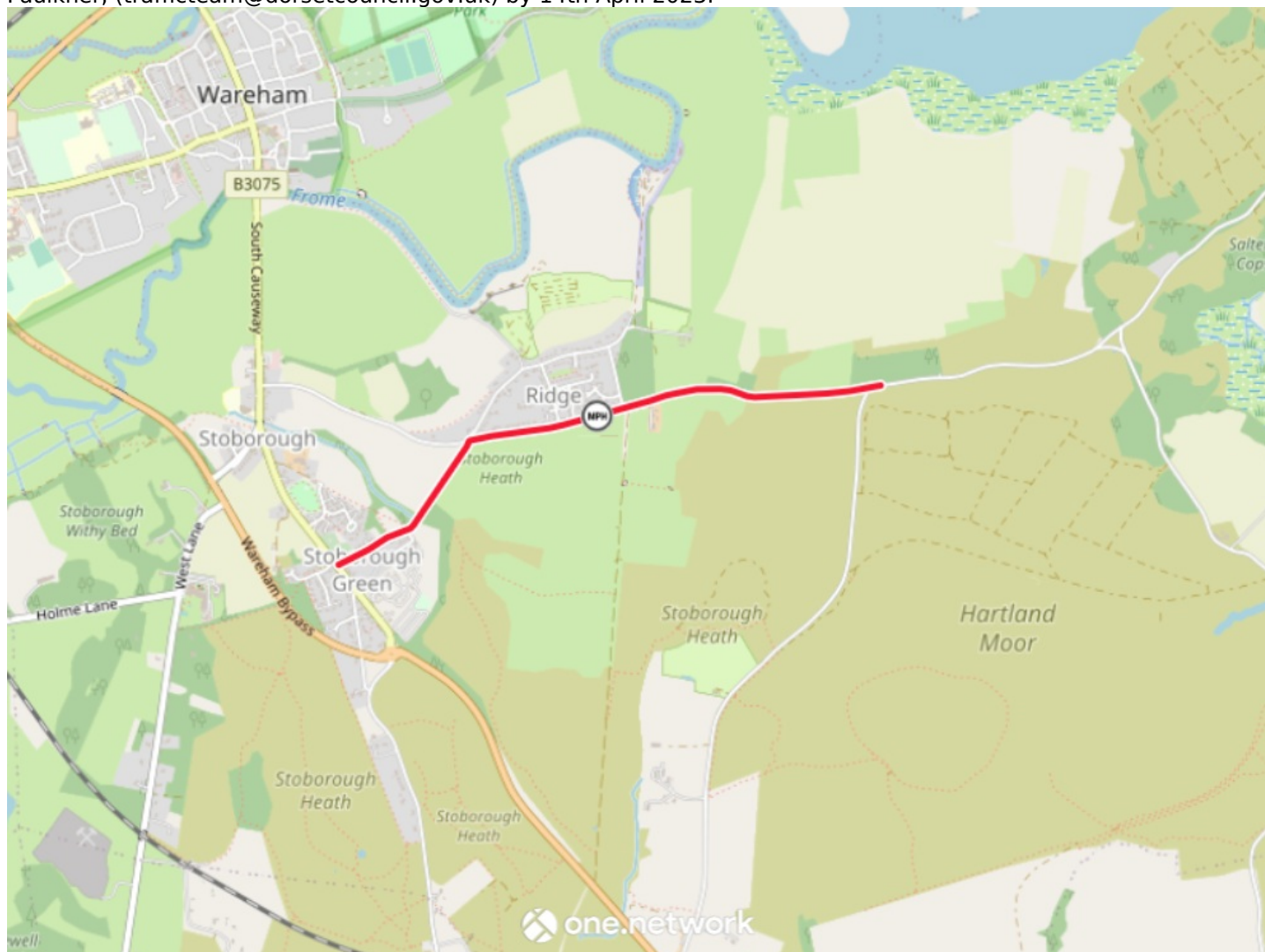


PROPOSED TEMPORARY 20MPH SPEED LIMIT, VARIOUS ROADS, STOBOROUGH & RIDGE

I have received an application from Kier to impose a 20mph speed limit on Various Roads, Stoborough & Ridge as listed; [i] New Road, Stoborough from the junction with B3075 to the junction with Arne Road; [ii] Arne Road, Ridge from the junction with New Road to a point 40 metres to the east of Soldiers Road (in both directions), a distance of approximately 2260 metres. The temporary speed limit has been requested to allow Kier agents working on behalf of Environment Agency to work on the Arne Moors Project (Planning Permission reference no. 2022/05149). The speed limit is required to manage health and safety risks associated with construction traffic. These restrictions are programmed to commence from 1st May 2023 until 31st October 2024.

Kier will publicise the temporary speed limit in a number of ways: they will place information boards on the road in this area to inform the travelling public of the works; they will carry out a letter drop as well as local engagement with local residents and key stakeholders directly affected by the works; and they will sign the temporary speed limit as well as a HGV diversion for construction related traffic. The following map shows the extent of the temporary speed limit.

This document is for information only, however if you have any concerns about this proposal, please contact Tom Faulkner, (trafficteam@dorsetcouncil.gov.uk) by 14th April 2023.



View all roadworks in your area - dorsetcouncil.gov.uk/roadworks-events