

ARNE PARISH COUNCIL NEWS



November 2015

EDITOR'S NOTES

The forecast was awful - but today was fantastic; I just had to go down to Arne to find a photo for the front cover. And what a day! A gentle warming breeze, a slowly incoming tide lapping the shore, deer lazing contentedly in the scrub - but all to the October chorus of rutting in the distance. I even discovered the new Raptor Trail. What a place! The RSPB, The National Trust and Natural England certainly

agree and I am pleased to include reports from them in this edition.

Parish Councillors continue to work hard on the Neighbourhood Plan, progress of which is described herein. Any items of concern can be raised at our Parish Council meetings which are held at 7:00pm on the third Thursday of the month at Stoborough Village Hall. You are all welcome!

STOBOROUGH PRIMARY MAKES EXCELLENT PROGRESS

What a fantastic start to the new academic year! I am delighted to say that we had fantastic results for our Y1 phonics test, at the end of KS1 and also at the end of KS2 SATs in summer 2015. Everyone worked really hard to achieve well and I would like to congratulate all of the pupils that sat the tests as well as the dedicated teachers and teaching assistants who continue to work tirelessly to ensure the children have the best academic start. You are all a credit to Stoborough School!

We had only been back a couple of weeks when we were informed that we had an assessor coming in to see if we had achieved our Silver Sports Award as part of the Sainsbury School Games Mark. I am delighted

to say we passed this with flying colours. We actually exceeded many areas of the criteria and are determined this will be Gold this time next year! Pupils love their sport at Stoborough and this area of their well-being has seen a complete overhaul during the last two years. We have moved from having only a single sports club to providing a whole range, these being offered to the children by specialist coaches.

We now regularly offer: Gymnastics, tag rugby, cricket, football, hockey, netball, tennis, multi-skills and dance, including tap dance. We also run lunchtime clubs which the children thoroughly enjoy.

At Stoborough we employ a range of coaches during the school day so the children are benefitting from specialists who are not only passionate about



their areas of expertise but also know how to support pupils to gain high levels of skill across different sports. No wonder the children sign up to everything with gusto and achieve so well in fixtures and competitions!

We have also become a Fairtrade School which reflects our caring Christian ethos of being thoughtful and kind towards others and our world. We continue to think of practical ways we can support people near and far and it is good to see everyone signing up to this.

We are taking part in a collaborative learning project with a small number of other schools across the Diocese, developing how to create deeper learning of emotional literacy through RE. We feel that understanding self, others and the world is a very important part of children's education and well-being and as a Church of England school, see the relevance of using RE as a context for this. We hope this project will help to make a positive difference to our children.

Our Mindfulness sessions for children and staff continue and we are now

hosting the parent sessions for both Stoborough School and The Purbeck School. We feel this supports the long term mental well-being of our pupils and is so important when you look at the statistics of young people who suffer from a wide range of mental health issues in their teens. Clearly, starting to develop strategies early on can only benefit all of our young people.

The whole school has been very busy with fundraising which is an important part of the school. Everyone wore green to school and staff organised cake baking and 'tea on the lawn' which raised a total of £335.05 for Macmillan Cancer Care. Families generously brought in lots of food goodies for our Harvest Celebration and a food sale raised a total of £154.33 which is being given to the Wareham Food Bank to help members of our local community. As a school, we feel it is important that children know the pleasure of giving and understand how this can make a positive difference to people near and far.

We would love to develop further links with our local community so please do contact me if you feel there is some way we can support you or you can support us! We are all looking forward to a very positive year!

**Deborah Corbin, Headteacher
Stoborough Primary School**

RSPB at Arne

Thanks to some generous private funding we have opened up a new seasonal trail at Arne, 'The Raptor Trail' and re-furbished an old hide originally opened in 1975 over looking Salterns reedbed. The trail will be open throughout winter so visitors can enjoy views of hen and marsh harrier, merlin, short eared owl - but closed in spring/summer. Surveys carried out over the summer have shown ladybird spiders are spreading and silver studded blue butterflies are doing well, but a search for the heath tiger beetle across all our heathland reserves was unsuccessful. Reptiles have also been surveyed by a team of newly trained volunteers and the estates team have built an adder hibernacula at the farm, ready for winter. Interns and staff from JPMorgan have been helping us to clear paths, remove pines and pull ragwort across the reserve as part of their Good Works scheme.

Arne Shop & Café - Open Easter 2016

Recent visitors to the reserve will have noticed work has started on our new shop and café at Arne on the site of the old toy museum and tea rooms. This has been made possible by external funding from the Coastal Communities Fund. It will help us to raise lots of funds to help us give nature a home across our reserves. We will also be improving the area around the building for wildlife by creating a



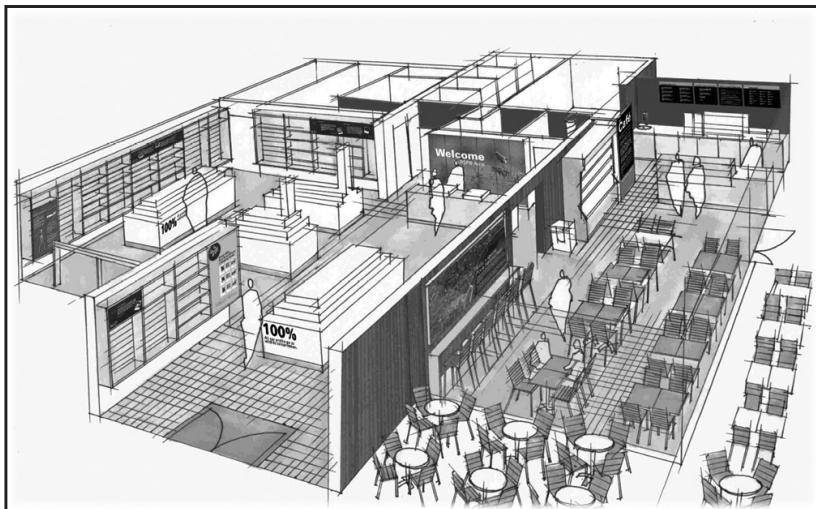
Roof work at the new RSPB shop and café at Arne, with artist's impression right

garden. This is funded by Veolia and will showcase how people can give nature a home in their own garden.

We will soon be looking for volunteers to be part of this exciting project. Could you be a café assistant, shop assistant or optics advisor and give visitors a fantastic experience? Or lend your green fingers to our wildlife garden and help give nature a home?

If you are interested in volunteering, contact us by emailing Dorset.Volunteering@rspb.org.uk or pop down and chat to us in the Visitor Hut.

Wareham Meadows - Arne Moors and Lytchett Fields. We have been cutting vegetation at Lytchett Fields to enhance the wet areas for feeding waders and it has worked really well, attracting species such as wood sandpiper, ruff and little stint, making Wareham Meadows one of the



best RSPB reserves in the country for wading birds. The new visitor views have worked well, giving great views of these birds, but also other wildlife such as dragonflies, water voles and stoats.

Grange Heath & Stoborough Heath

The pigs are still working hard at Grange to remove humus from the soil, aiding re-growth of the heather and restoration of the heathland. Volunteers from across Dorset joined us for a guided walk to visit them and see all the good work they have been doing! You can already see the heather starting to sprout up. Surveys at Stoborough Heath reserve have found breeding Southern Damselflies in the area we created especially for them over the last two years. Although the population is still tiny - five males - and very vulnerable, it is fantastic news as they are in decline across

Dorset and the rest of the UK. We are hoping they will continue to increase and spread to other nearby sites.

Discover Arne

Wednesday 9th September to

Wednesday 30th December.

10 am-noon

Come on one of our free guided Wednesday walks to track down a whole host of wildlife. In the colder months we may see fabulous fungi, rutting deer and the thousand strong flocks of avocets that over-winter here. We may see majestic harriers.

Price: Free - Donations Welcome

For a full list of events, please visit www.rspb.org.uk/events and search for Dorset.

Rob Farrington & Claire Young, RSPB

NATURE CONSERVATION IN ARNE PARISH

This parish must rank as one of the richest in the UK for wildlife, so unsurprisingly it has seen a lot of activity over the last few decades by Nature Conservation bodies such as The National Trust, Natural England and RSPB. We'd like to explain the thinking behind all this activity and then bring you right up to date with the recent acquisition of Slepe Heath by the National Trust and the work that has been going on there by people from the parish.

Heathland Wildlife and a Professor Called Lawton - Conservation in the UK has been marked over many decades by the publication of a number of key reports. Another of these appeared in Autumn 2010 authored by Professor Sir John Lawton and titled 'Making Space for Nature'. Lawton, and his team, had been asked by government to assess if our present suite of nature reserves and protected sites were adequate to deliver our national aspirations for wildlife conservation. His broad conclusion was 'good start but more to do'.

Better, bigger, more joined up

The 'more to do' was further characterised, in part, as follows. Some nature reserves and Sites of Special Scientific Interest (SSSIs) are not meeting their potential to deliver for wildlife and where this is the case

their management needs to be improved. Even where the management of the individual sites is good the series is performing sub optimally because individual sites are too small - this increases the risk of local extinction of individual species - and not sufficiently well connected with each other - meaning that species often find it difficult to move between sites, especially in response to environmental changes.

Better

Part of the government response to Lawton's report was to set aside around £7m to fund 12 projects in England that would demonstrate how the challenges in the Lawton report might be met. A partnership of conservation organisations in Purbeck headed by the Dorset Area of Outstanding Natural Beauty (AONB) successfully bid to be one of those projects and Wild Purbeck ran as a Nature Improvement Area (NIA) from April 2012 to March 2015.

With the benefit of hindsight we probably cheated a bit as locally we'd come to many of the same conclusions that Lawton did some years ago without articulating them quite so eloquently! So what have we been doing and what does the future hold now that this specific three year project has ended?

Most of the special wildlife sites (SSSIs) in Purbeck are already either

well managed or have the actions in place to make sure they will be well managed in the future. Specific actions that many of you will have noticed in recent years include our collective efforts to return livestock grazing to the heathlands since the mid 1990's after an absence in many cases of over half a century. There is a range of wildlife which is heavily dependent on either the small scale variety in vegetation structure that appropriate livestock grazing delivers or on recycling the nutrients in the dung that grazing animals leave behind. In the future we hope to create a bigger grazing unit joining the reserve at Sunnyside Farm through Hartland Moor with the RSPB reserve at Arne.

Over the years many of the heaths had become covered in non-heathland vegetation that is a very much poorer wildlife habitat than the heathland which it replaces. Some of this was a result of deliberate policy at the time – planting conifer forests on the heaths and some was a result of neglect – invasion by non-native species like Rhododendron. In recent years you may have noticed significant changes in the local landscape for example with the substantial areas of Rhododendron removed from the RSPB reserve at Arne or the removal of most of the pine plantation from what we can, again, refer to as Slepe Heath. All of this work to improve the condition of our SSSIs will continue and be consolidated in the future.

Bigger

The Nature Improvement Area project was specifically not about land purchase but over the years work to increase the size of the core habitat resource has included the purchase of several parcels of land – Stoborough Heath in the 1980s followed by Sunnyside and Arne Farms and more recently Slepe Plantation - now Slepe Heath - and the worked out ball clay pit surrounded by the RSPB reserve at Arne. Clearly we have been making sites 'bigger'.

More joined

In the context of what happens here 'bigger' has also delivered 'more joined' but there is other work that has contributed to the 'more joined' agenda also. One of the project partners is the Forestry Commission and over the years they have been adjusting their felling plans for the local forests, including Rempstone, so that more areas are left unplanted to return to heathland and to structure these 'new' heathland areas so that they create a corridor. South of Poole Harbour we are now within sight of reforming the historic link between Studland and Godlingston Heaths and Hartland Moor which, with the exception of the Corfe River Valley, would have been one continuous swath of heath not that long ago.

'More joined' won't always be a direct physical connection – we're not about to demolish Bournemouth! Where

the direct link isn't possible to make any more Lawton suggests establishing 'stepping stones'. After the Wild Purbeck NIA had taken flight we were presented with a further opportunity to create and manage 'stepping stones' in the space between Purbeck and the New Forest when the remnants of Lord Wimborne's estate was put on the market.

This, the Great Heath project, is being led by Dorset Wildlife Trust and I mention it here to make an important point. Lawton encouraged us to raise our sights beyond the protection of individual sites and to look for functioning landscapes – landscape scale conservation. But having moved successfully from thinking about the conservation and management of individual sites to the landscape in which they sit we need also to think about how those adjacent landscape link.

Just a few centuries ago the heaths of the Hampshire basin stretched from the east of the New Forest to the outskirts of Dorchester. We won't be able to recreate that but we can make that historic landscape function far better for both the wildlife that inhabits it and the people who live there and enjoy their wildlife.

Slepe Heath

Slepe is the Saxon name for a hill by a boggy place, which exactly describes the National Trust's new acquisition in Arne Parish, a hill of dry heath-

land that rises above the wet bogs of Hartland Moor to the south and the damp fields and heath that run down to Poole Harbour to the north. In the 1950s a large proportion of the 90 hectares of Slepe Heath disappeared under a conifer plantation but in 2007 Natural England was able to secure an Environmental Stewardship Agreement with the landowners. This resulted in the removal of most of the conifers - the process of restoring the heath and all its wildlife had begun.

Slepe Heath was then offered for sale in 2014. Bounded by Arne, Stoborough and Hartland National Nature Reserves, Slepe will be integral to the success of the large grazing area described earlier, stretching across the Purbeck heaths. One of our first tasks will be to remove fences between Slepe and Hartland, allowing the Red Devon cows to have free range of the site. Our priority for 2015 is to undertake biological and archaeological surveys that will inform the future management of Slepe.

We also realise Slepe will become an important place for local people, especially as it offers superb panoramic views from the top. The site is open for quiet recreation, including dog walking, however we request that pet owners keep their animals on leads during the bird nesting season from April to August.



Showing Slepe Heath Some Love

Local people have already helped us by pulling and cutting pines on Valentine's Day - the removal of pine seedlings left over from the plantation crop will be an ongoing task for years

to come. In March the year five children from Stoborough School walked out to Slepe to help us pull more pines, have a picnic and learn about the site. They proved to be excellent lizard spotters!



Ian Alexander, Team Leader Natural England
Tania Kaplan, Lead Adviser Natural England
Phil Stuckey, National Trust Lead Ranger

ian.alexander@naturalengland.org.uk
tania.kaplan@naturalengland.org.uk
Philip.Stuckey@nationaltrust.org.uk

MY ROLE AS AN ARNE PARISH COUNCILLOR

Since joining the Parish Council in June 2014 there have been moments of great satisfaction and, occasionally, frustration - when an obvious course of action is held up or delayed by 'the system'. Overwhelmingly though, the opportunity to work for and assist the residents of the parish has been a very rewarding experience.

Initially, it seemed to me, the democratic process, while noble in intent, was rather cumbersome when you wanted or needed to get things done or resolved. A career spent entirely in the private sector conditions one to view issues in that light. However, once you understand 'the system' - both formal and informal - the process begins to move at a more acceptable pace.

While I was delighted to become a councillor last year I did not quite anticipate the volume and frequency of the email correspondence associated with parish-related business. Performing the duties of a councillor at a professional level requires allocating sufficient time to reading and responding to this constant flow of mail. I was particularly impressed at the approach taken by the council when required to address certain local matters - they will visit a site and meet with the parties involved. The

council members also regularly travel the parish to report on the outcome of works undertaken by other public agencies and report back to the council with their findings.

Parish councillors also participate in a number of charities, trusts and groups - as representatives of the parish. In my case this includes Perenco, Imerys, the Swanage Railway Trust, the Wareham and District Development Trust, and tree protection duties. Add the training required to understand the complexities of planning law and best practice, as it applies to parish and town councils, and you have a rather busy agenda.

Councillors are also currently engaged in developing a neighbourhood plan which, in turn, demands attendance at meetings to discuss and consider the needs and the views of local residents. The plan, when adopted, will represent a vision for the future as desired by the residents of Arne parish.

Further time has been recently devoted by councillors in crafting detailed responses to the important issues of the Dorset Heathlands and the Purbeck Local Plan Review.

The past nine months have certainly been challenging. On the other hand the level of support provided by the councillors to each other and the dedication and willingness shown by all

of them to assist the residents of the parish and to represent their interests in a sensitive yet impartial manner

has been a very positive and rewarding experience for me.

Don Hunter

HOW MUCH DO YOU VALUE YOUR COMMUNITY?

As you all know, our Neighbourhood Plan has occupied a great deal of our thoughts recently and we have been looking at good practice elsewhere. As part of its plan, one local community has identified what it values, under the headings, "Community Facilities" and "Green Spaces".

We think this is a good idea and, to enable your involvement, we should like to consult you about the facilities you wish to protect. We've made a start! It's not exhaustive - it's only the beginning and we very much rely on your response to make it reflect what Arne residents value in our community.

Community facilities

Stoborough Primary School: founded in 1872, now a Church of England foundation school for children from four to eleven.

Stoborough Village Hall: an established facility serving its local community.

Furzebrook Village Hall: with views over the heath, the hall is ideal for meetings, classes, wedding receptions and parties.

St Nicholas Church, Arne: the delightful early 13th century church.

The Hayricks, Stoborough Meadow: owned and continually improved by Arne Parish Council – a recreational area for children of all ages within the parish.

The Allotments, New Road/Corfe Road: owned by Scott Estate, leased to Arne Parish Council, used extensively by Arne residents.

Please let us know what else you think is important to our parish that can be included under any of these two headings. We'd also be grateful if you could add just a sentence to say why it's important to our community.

Please respond to me on the email address below, by the end of November. NPconsultation@gmail.com or phone Ashley Pellegrini on 554110

Ashley Pellegrini

ARNE PARISH NEIGHBOURHOOD PLAN: WHERE ARE WE NOW?

You might well be thinking what is happening with our Neighbourhood Plan. It's not a quick process but a lot of work has to be done behind the scenes with our strategic steering group and various working parties.

In our first attempts at pulling the plan together, I think we're doing quite well. Currently, we are compiling a first draft. All the policies are being scrutinised, quality assured, rewritten and sent around to the various members of the steering group for comment. There are probably too many and some pruning may have to take place. Robert Kenward is being a stalwart in ensuring that the policies from this diverse range of sources read coherently.

So here are a few proposed ideas for policies. Don't jump up and down too much yet as they are only in the process of development! As the residents of Arne Parish, eventually the decisions will be yours. Another consultation evening is to be planned and our referendum is due to take place sometime next year.

In the Housing working party, chaired by Bridget Kenward, policies are being developed about retaining/extending the parish settlement boundary and areas for housing development. All applications for new development

should demonstrate high quality design for sustainable living at a scale, density and distinctiveness appropriate for local needs. Social and affordable housing is to be encouraged, as is building of flats, annexes for multi-generational living in existing property and in-fill development, where appropriate.

Vivienne Ward, as chair of the Environment working group, proposes that all the land with international protection or national designations must be protected. The group recognises the importance of the water meadows and that the associated drainage network is critical for flood management. Cooperation between Natural England and the Environment Agency with local authorities is essential to ensure the appropriate management of all the ecosystem services, vital for maintaining the agricultural framework of the area.

The Traffic Management and Accessibility group led by our parish council chair, Caroline McLeod, is developing several policies: campaigning with Stoborough Primary for measures to improve safety on the roads in front of the school, specifically for a 20 mph speed limit during school access hours; seeking safer use of Nutcrack Lane; lobbying for a safer road crossing between Stoborough Green and the Hayricks recreation area. The group recognises the importance of non-car users and has highlighted the

need for increasing safety for walkers, cyclists and families on their way to school or recreational areas.

Don Hunter, chair of the Business and Employment group, is looking to protect and support existing employment, encouraging working from home, and coordinating, developing and promoting tourism. A small business award within the parish is even being considered! For most residents, the provision of superfast broadband is a key initiative for the parish. The group has identified a need to pursue vigorously the timely installation of superfast broadband services to all properties within the parish, encouraging small enterprises to flourish and provide better support for our many internet users.

Anne Pugsley, chair of the Health group, has highlighted policies around encouraging social support for the elderly within the community, especially for lonely and isolated persons. The group is also focusing on the provision of more care homes in the Wareham area and supporting the greater use of Wareham Hospital for diagnostics and treatment.

The Crime and Policing group, chaired by Ian Jenkins, recognises that the parish is, at present, a low crime area, and there remains significant community support for the police in sustaining the low number of crime incidents. Regular reassurance from the

police to combat the fear of perceived crime is needed. There is increasing concern about littering and fly tipping within Arne Parish, particularly during the summer period. Continued vigilance in the reporting of incidents is to be encouraged.

I chair the Community Well-being - formerly Education, Recreation and Youth - group, promoting policies around supporting the provision of education in the parish at Stoborough Primary School and ensuring that any further development to the school's facilities will take into account its sustainability. Residents of all ages should be encouraged to take full advantage of the wide range of leisure and cultural activities in Arne Parish. With the help of willing community organisations, these opportunities should be enhanced, particularly for the young.

So, I hope you can see that a lot of ideas are being developed as a result of our consultation with you. Localism, if it works, should ensure that our needs are met and our views are taken into account in the planning process. As the Neighbourhood Plan develops, we should gain a clearer view of what our future holds for us.

Ashley Pellegrini

STOBOROUGH WI NEWS

2015 is The Centenary of the WI and we have marked this by completing an embroidered tablecloth for our committee table - much admired at the recent Purbeck Arts and Crafts Exhibition. We held a successful Summer Fair in August at Wareham Corn Exchange and are hosting an Autumn Lunch at Wareham Parish Hall in October.

Our November Meeting speaker will be Jenny Elmes, talking about the Dam Busters raid during WW2, and in December we shall be staging our own pantomime to entertain members following a buffet lunch. In the New Year we shall be gleaning tips on how to avoid telephone and computer fraud and participating in an af-

ternoon of African drumming in February, which promises

to be great fun, no musical experience necessary! Come along and join in, we are a friendly bunch and have flourishing craft, skittles, reading and walking groups too. We also raise funds for local causes, this year including Wareham Hospital, the Rex Cinema and Helping Hands Age Concern and continue to support Wareham in Bloom by caring for the flower tubs in Wareham Library Garden.

We meet the second Wednesday of each month at 2pm at Stoborough Village Hall. For further information contact Harparkash Rispin on rispin@orpheusmail.co.uk or jillscragg@btinternet.com



STOBOROUGH SUNDAY AFTERNOON TEA CLUB, STOBOROUGH VILLAGE HALL, West Lane, Between 3-5pm

We started this venture in April and since then have held afternoon tea on the **third Sunday** of each month. This enterprise has been a success and we have had plenty of volunteers offering to bake and serve tea as well as others offering transport. There is plenty of room in the Village Hall and we would welcome more people of any age to join us for tea, freshly made sand-

wiches and/or a slice of home made cake. All at very reasonable prices. We have also recently been selling freshly picked produce such as beans, courgettes, beetroot, curly kale, as well as jams, preserves and pickles.

November 15th will be the last session for this year, as the village Hall is being used for the Pantomime in December and January, we will resume on the 21st February 2016. **For further information or if you require transport telephone 01929 553503.**

STOBOROUGH VILLAGE HALL NEWS

The trustees are pleased to announce a generous grant from Viridor Credits for refurbishing the Village Hall. Work should shortly start on reroofing. This won't affect use of the two halls. Next year, work will commence on the internal insulation of the ceiling and loft and during that time the main hall will be out of action for a few weeks. Finally, the car park will be hard-surfaced. The Hall AGM will be held on 2nd November at 7pm. This is open to all Arne Parish residents and hall users. ***If you wish to book the hall for an event, please telephone 01929 556772.***

PARISH CLEAN-UP!



23 volunteers committed a couple of hours of their time to collect litter and rubbish from the roadsides, ditches, drains and waterways of the parish on Sunday 25 October. Cllr Don Hunter acknowledged that while most people are sensitive to the environment and dispose of their rubbish responsibly there is still some room for improvement. Between them, the volunteers collected between 30-40 bags of rubbish which was taken to the waste depot in Wareham for recycling.

ARNE PARISH COUNCIL ACCOUNTS SUMMARY

You might like to know how the Parish Council spends the money we are allocated. Here is list of the income and expenditure for the year to 31st March 2015. The sizeable surplus is due to the monies received from central government towards the creation of the Neighbourhood Plan. A full set of accounts can be found on the web <http://arne-parish-council.sycl.net/> in the Documents section.

Income

Allotments year to 31st March 2015	70.00
Neighbourhood Plan	9897.00
Precept year to 31st March 2014	26236.46
Government grant	870.00
Account interest	43.72
Recovered VAT	970.24
<i>Sub-total</i>	38087.42

Expenditure

Wages & PAYE	5845.08
Mileage	491.77
Office Admin	1228.17
Subscriptions	511.25
Training	384.00
Insurance	995.50
Audit fees	180.00
Donations	35.00
Bins/signs	739.48
Allotments	115.00
Open space maintenance	3074.57
Landscaping	308.75
Play equipment maintenance	490.00
Neighbourhood Plan costs	2155.70
Finger post repairs	440.00
Burial Committee	3220.00
Recoverable VAT	1031.49
<i>Sub-total</i>	21245.76

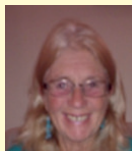
Surplus to go into reserves **16841.66**

ARNE PARISH COUNCIL



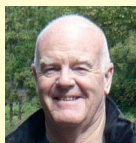
Amanda Crocker - Clerk
arneparishcouncil@gmail.com
01929 472327

Caroline Macleod - Chairman
car.macleod@btinternet.com
01929 550210



Vivienne Ward
vamward@hotmail.co.uk
07778 611508

Don Hunter - Vice Chairman
dhhunter@btinternet.com
01929 551587



Richard Bessant
richardbessant1@gmail.com
01929 553516

Avris Wakefield-Sutton
avris.ws@purbeck1.plus.com
01929 550432



Ashley Pellegrini
01929 554110
ashleypellegrini@btinternet.com

Ray Scragg (Newsletter Editor)
rayscragg@btinternet.com
01929 551776



ARNE PARISH COUNCIL MEETINGS

These are held: 3rd Thursday of every month, except August, starting at 7 pm at Stoborough Village Hall. All welcome!

OTHER USEFUL CONTACTS

Purbeck District Councillor
Malcom Barnes
cllr.barnes@purbeck-dc.gov.uk

Dorset County Councillor
Mike Lovell
mwjlovell@gmail.com

Ridge Residents' Association Secretary
Janet Toal 01929 550767
toal@janettoal3.orangehome.co.uk

Stoborough Meadow Association
John Ives
john.c.ives@btopenworld.com

Stoborough Village Hall Secretary Jill Scragg
jillscragg@btinternet.com
Bookings Lyn Burgess
Tel: 556772