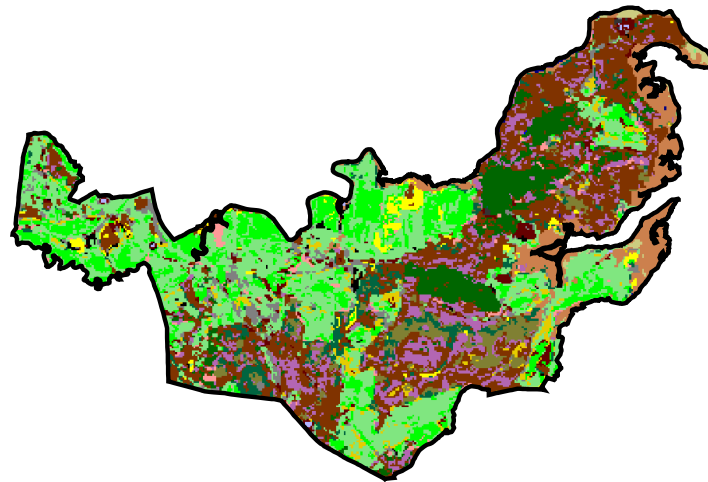


What nature data do local people in UK want and what can they contribute?



Former Councillor Bridget Kenward

of Arne Parish in southern UK (LAU2)

1,200 citizens, 27 km²

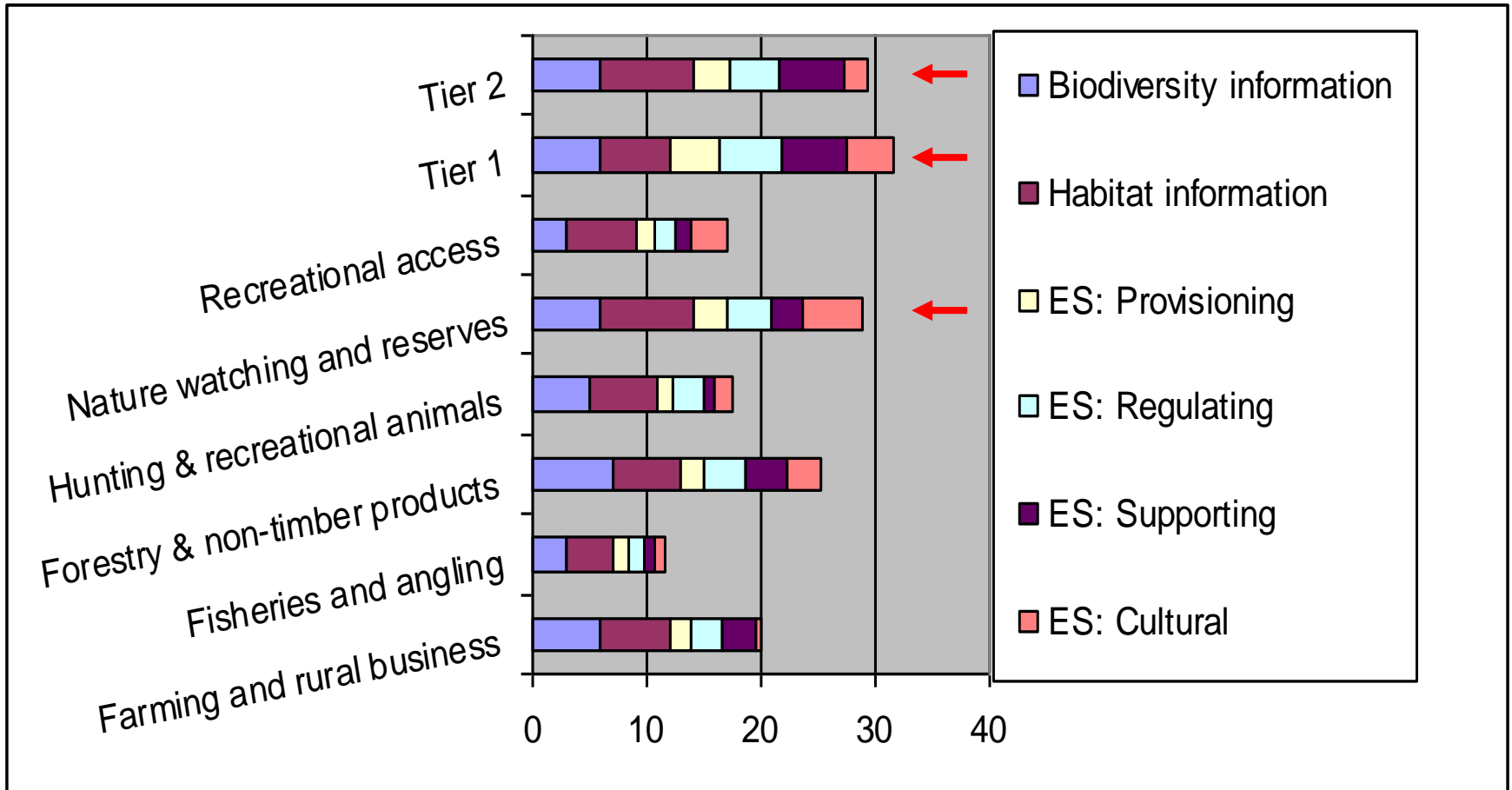
and of Purbeck District Council (LAU1)

40,000 citizens, 450 km²

Making Complex Science Simple for Community Conservation

**What support for conserving biodiversity and
ecosystem services do local people want?
(survey 5 local administrations in 30 states)
(8 case studies with local administrations)**

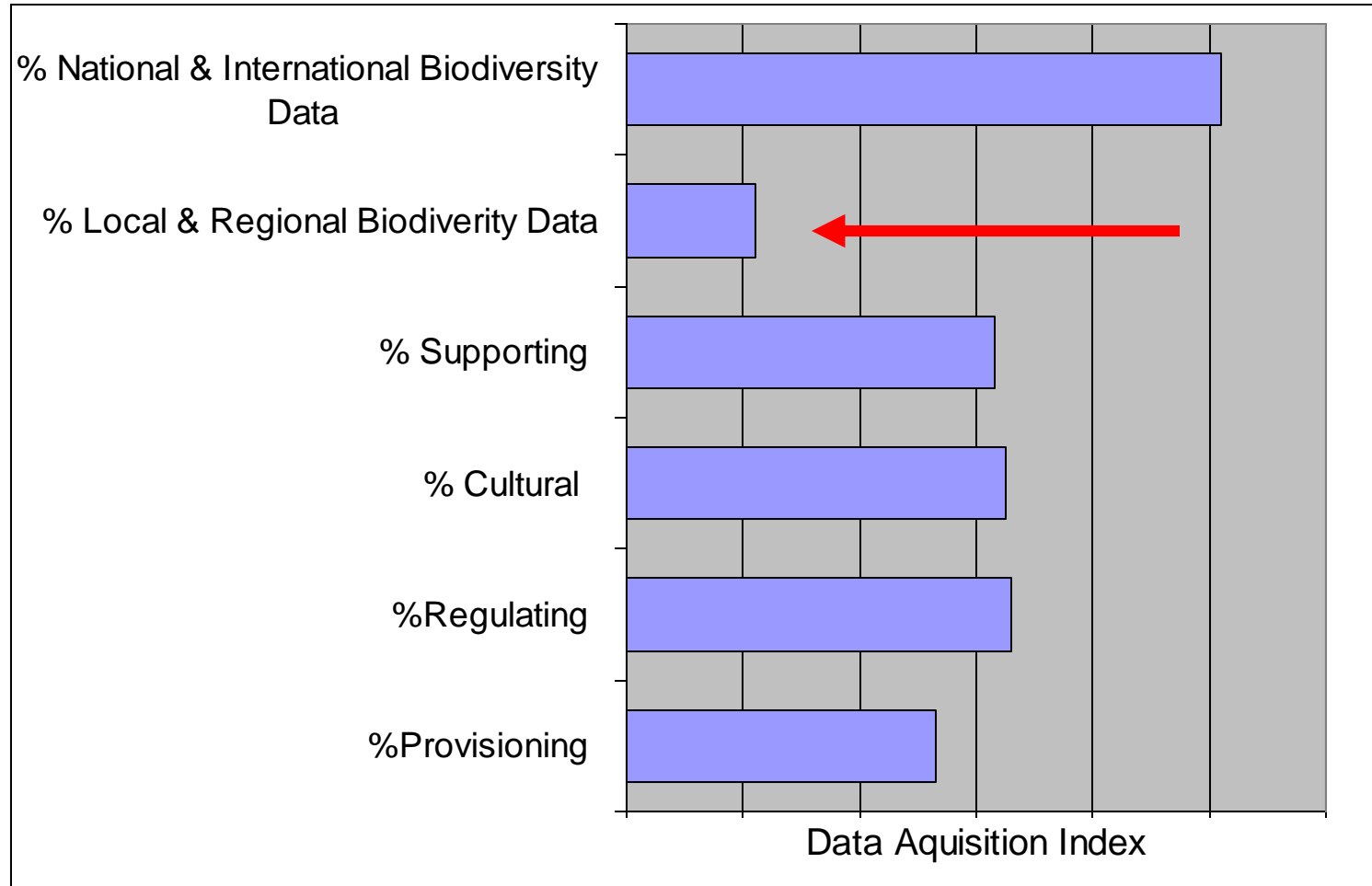
What type of information is needed by the different categories of stakeholder?



- All categories needed by all, especially biodiversity & habitat info
- Local government & nature reserves indicated the greatest need

Adequacy of data supply - different categories of information

Accessibility of information grouped - all individual stakeholders using Daq
Local & regional biodiversity data particularly lacking

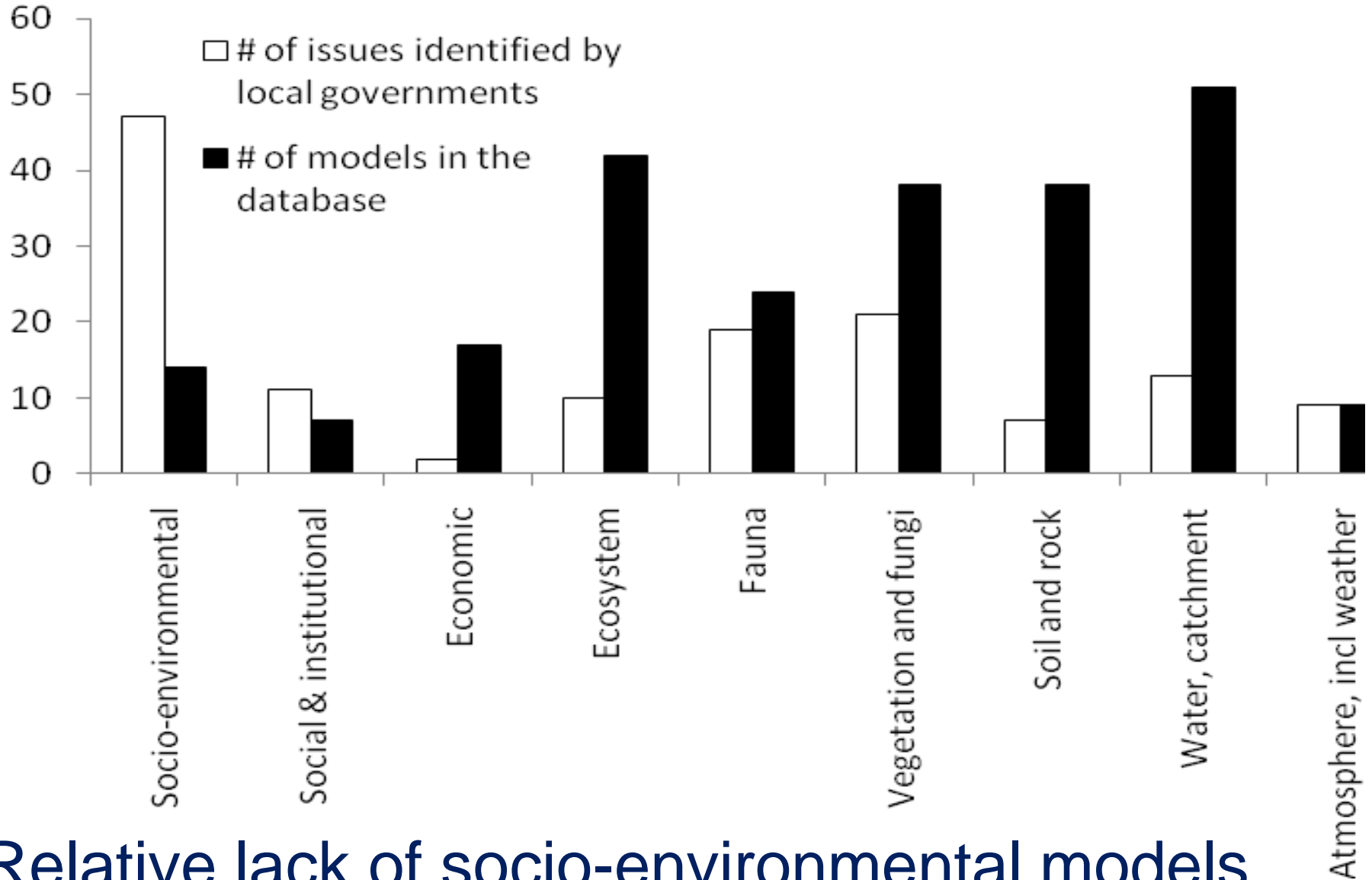


DAq Index = \sum (% responses * weight) where none= 0, some=1, most=2, all=3

Workshop for South America,
Lima, Peru, 26 October 2017.

Tanglewood Farm & Research Ltd

Gap analysis of models for forecasting



Relative lack of socio-environmental models

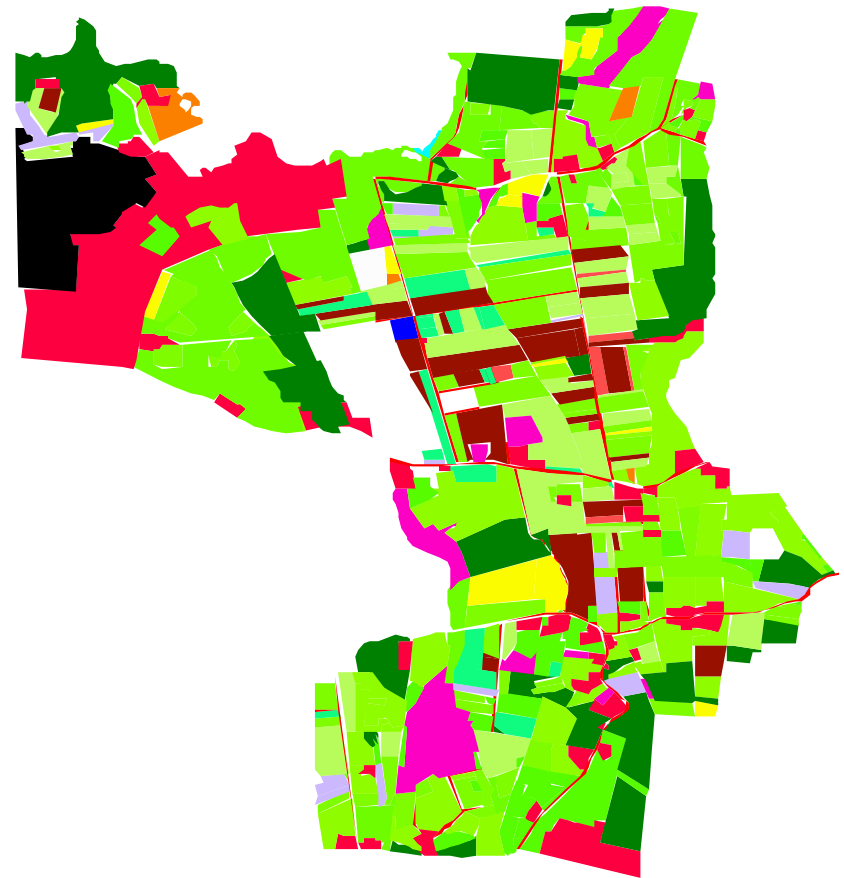
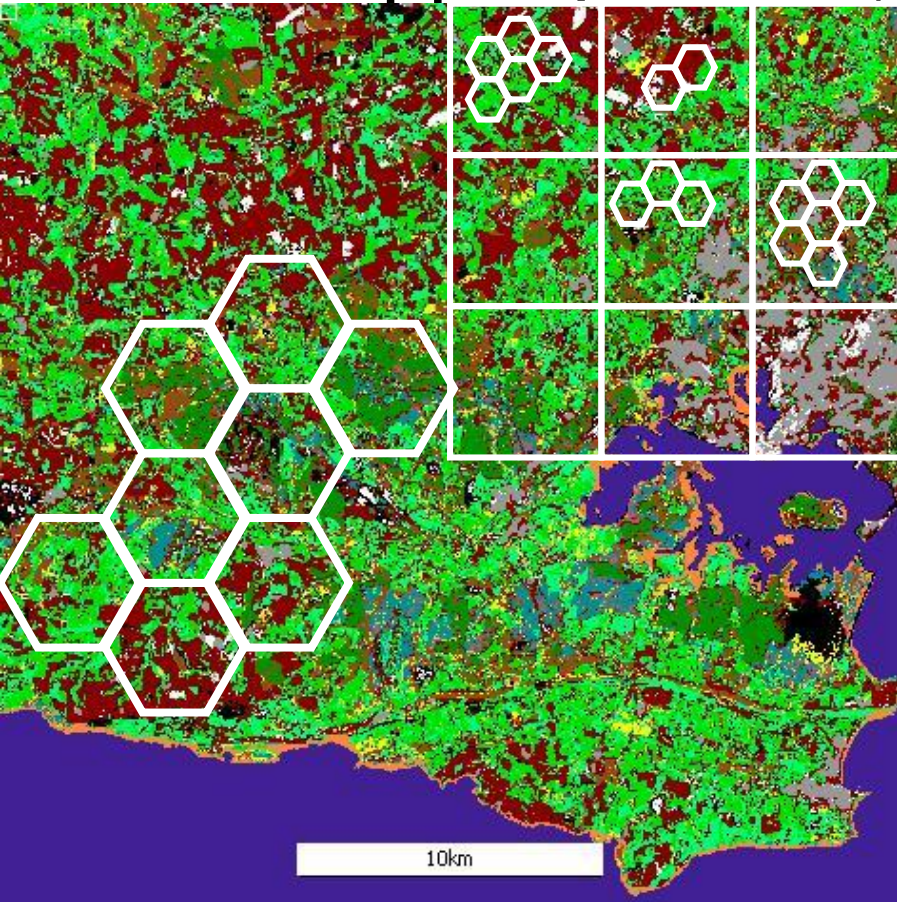
Making Complex Science Simple for Community Conservation

What support for conserving biodiversity and ecosystem services do local people want?
(survey 5 local administrations in 30 states)
(8 case studies with local administrations)

**Maps of species & habitats & socio-ecology
forecasts to assist land-use decisions.**

**What is available?
What can they contribute?**

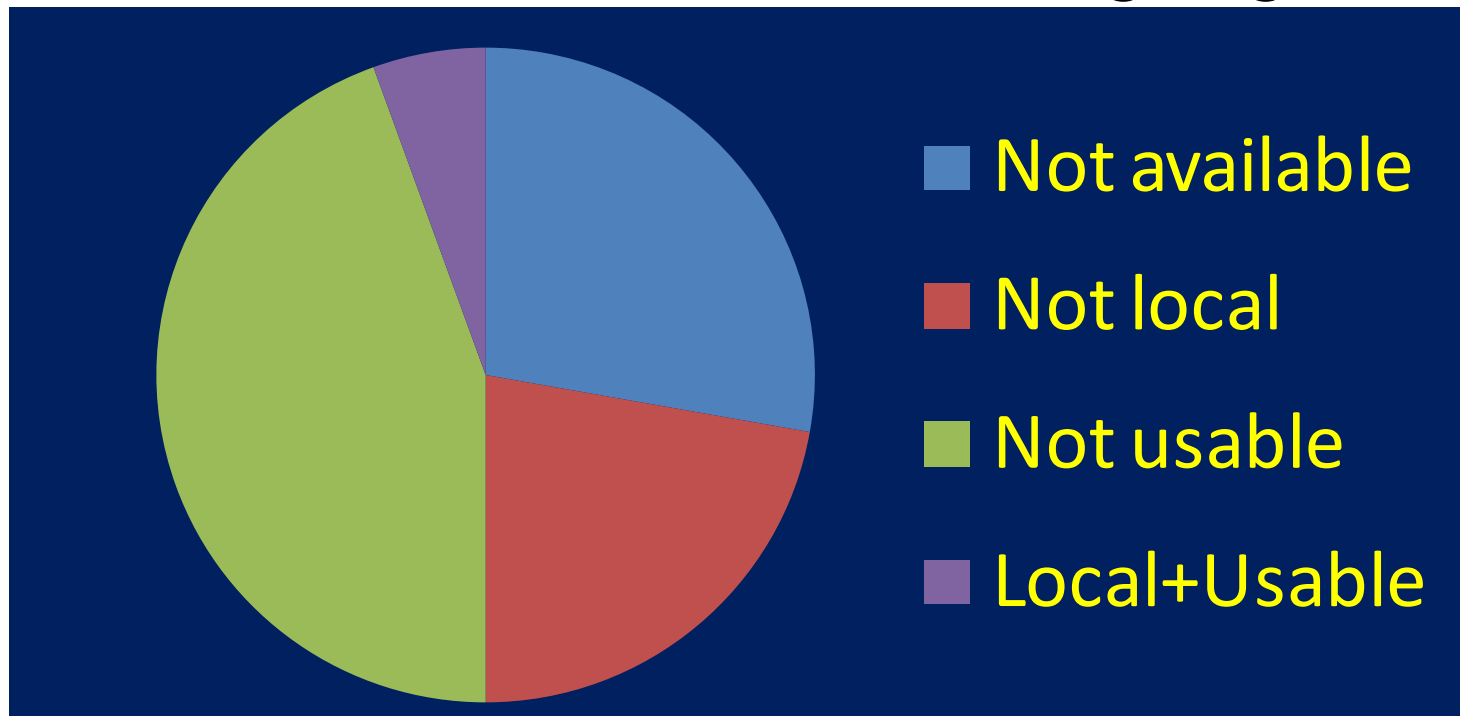
Remote mapping (LCMGB) is a wonderful tool, but decision support predictions by modelling species needs mapping at field, park & even garden scale.



Satellite mapping therefore needs complementing by details of fine-scale ground-based maps. Ground-based for detail, (by Swedish hunters, 1985)

Re-examination by practitioners of 198 models deemed applicable at field scale

Database models (198): 50% were no longer available or not for local use, with only 6% deemed usable locally by non-experts. The 10 models use at most 2 local languages.

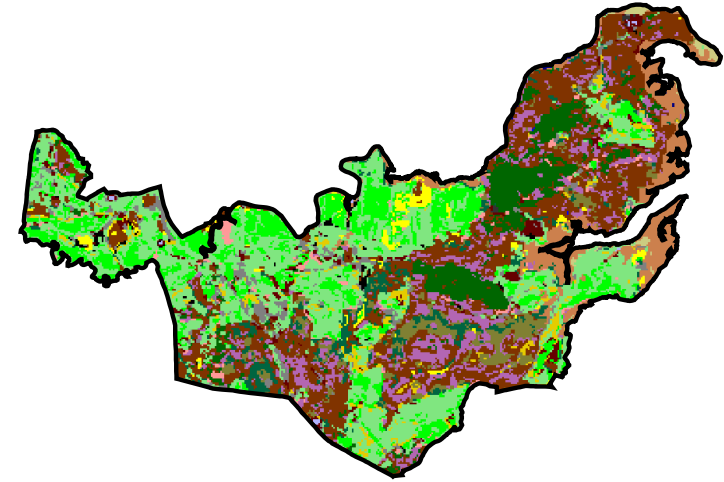
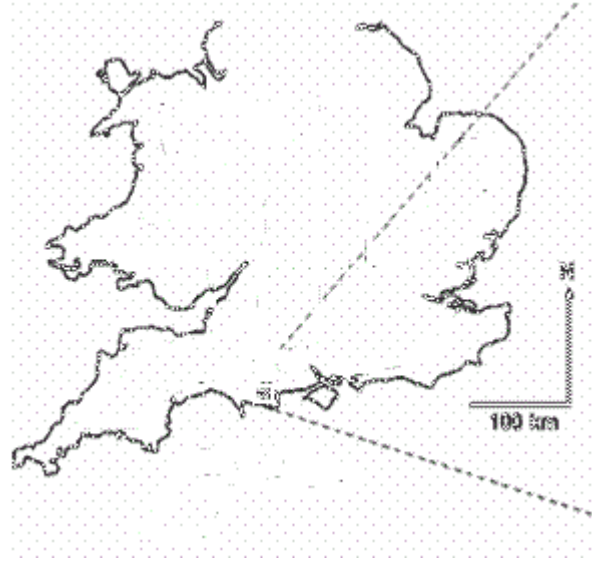


Very poor transfer of science/technology to local use!

Community Project: Deer

Arne Parish in southern UK 1,200 citizens, 27 km²

- In gardens
- In forestry
- On farms
- For wildlife habitats
- On roads



Q59 Please look at the map and mark a different letter (A,B,C etc.) on it to show each place where you have seen deer or damage by deer during the past 12 months. If you were walking/driving/riding when you saw the deer damage, please also draw a line for the whole route on the map touching the letters A,B,C for deer seen on that route. Then please answer the questions below using the letter that you entered on the map.

If you saw deer at that place about how many times did you see them there in 2010

If you saw deer please give a number for the most you saw at that place in 2010 on any occasion

If you saw deer, about how many times did you visit that place or walk/drive /ride that route in 2010?

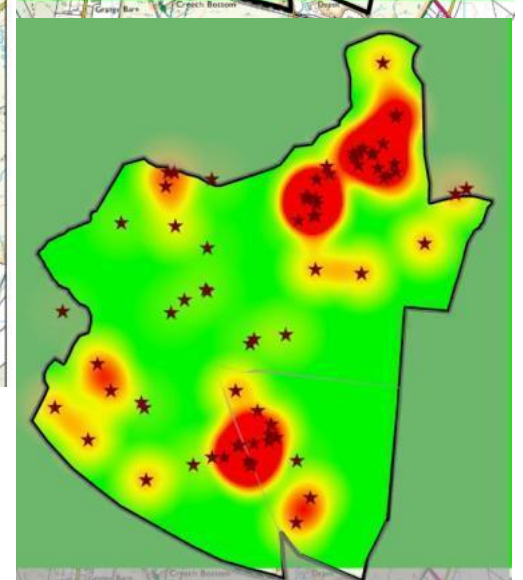
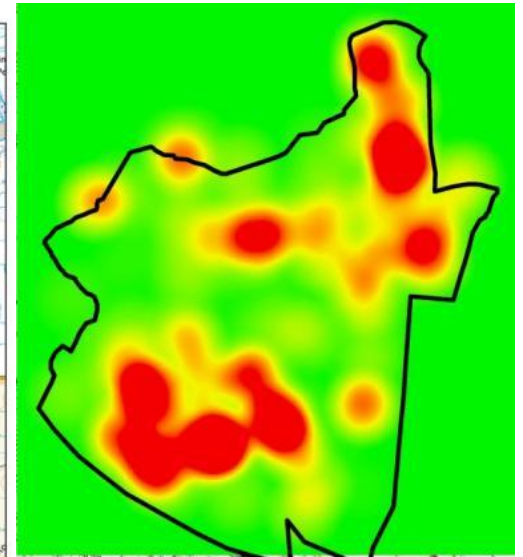
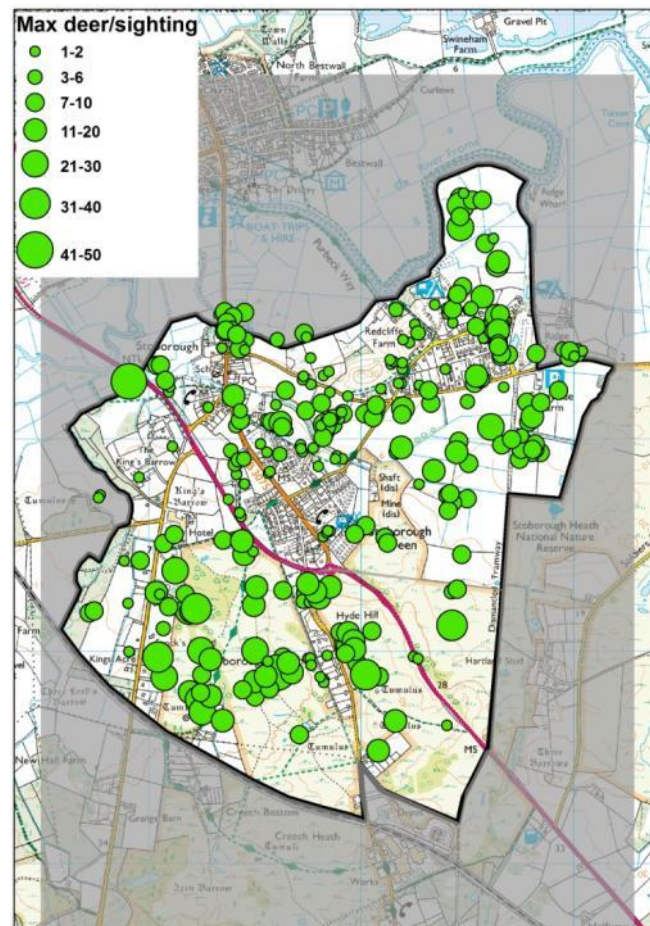
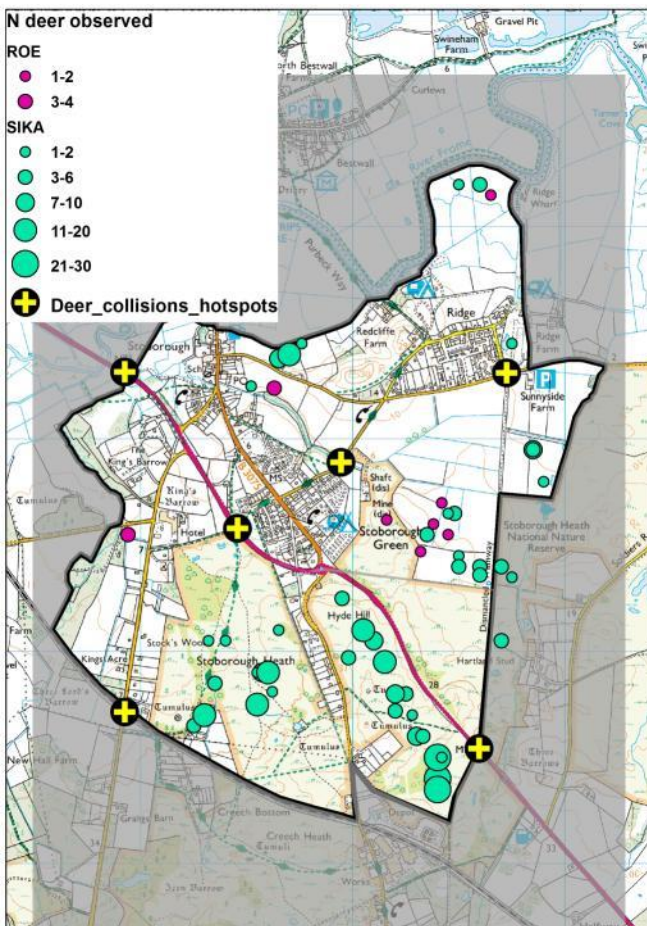
If you saw damage to bushes, crops, & vehicles, in what month(s) did you see the damage

A

B

C

In Arne Parish (UK) citizens were good at recording deer sightings & damage.



Systematic survey of deer by a post-doctoral biologist.

800 sightings by the public gave better data on density & damage.

Given a system, what could citizens give in exchange: help to manage wildlife by fine-scale mapping of routes & habitats?

We made it fun,
with GPS and
drawing over
Google maps



TESS Mapper - Garden Cottage, Boxwell - 21 Apr 2010 03:30:37

File Help

Mapping Type

- Deciduous woodland
- Coniferous woodland
- Rough grass
- Buildings
- Grave
- Fresh water

Mapped Objects

- Fresh water
- hole
- Buildings
- Deciduous woodland
- Red fox
- Coniferous woodland

Area Details

Type: Buildings

Points: 8

Area: 104.67 m2

Area Points

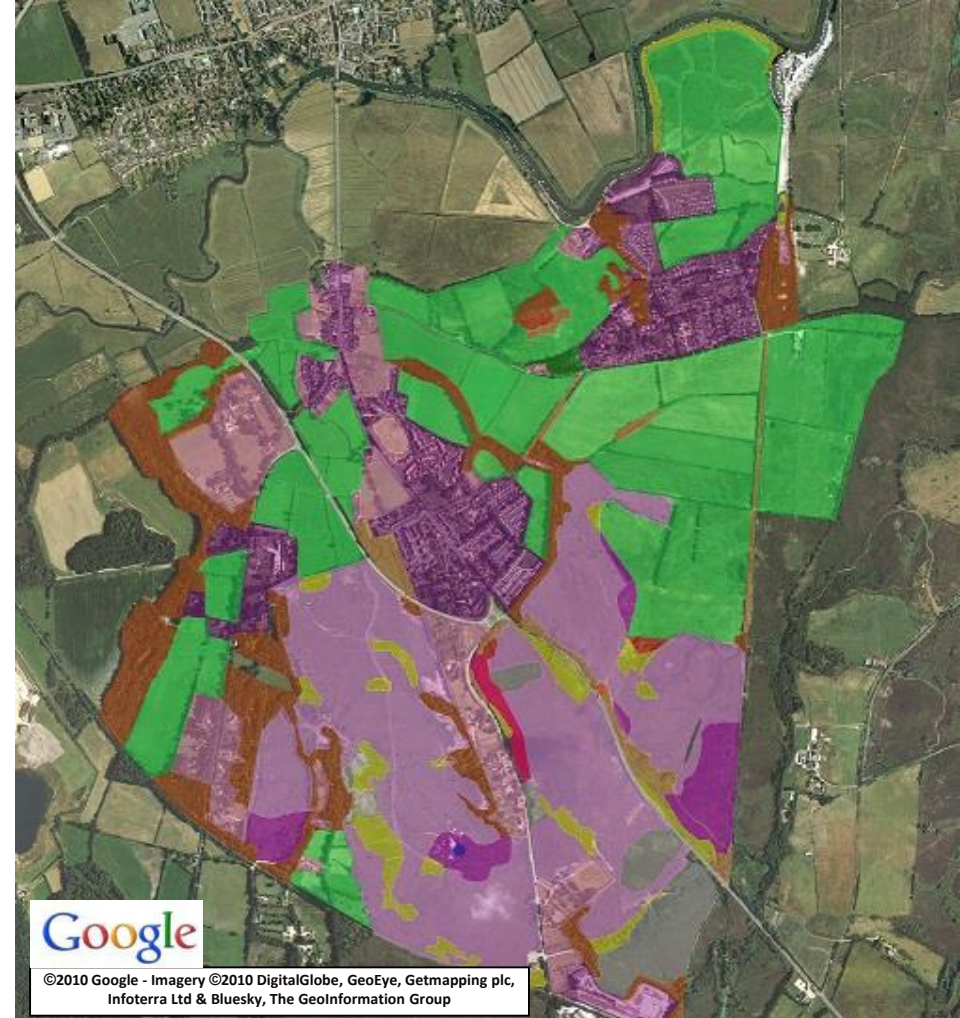
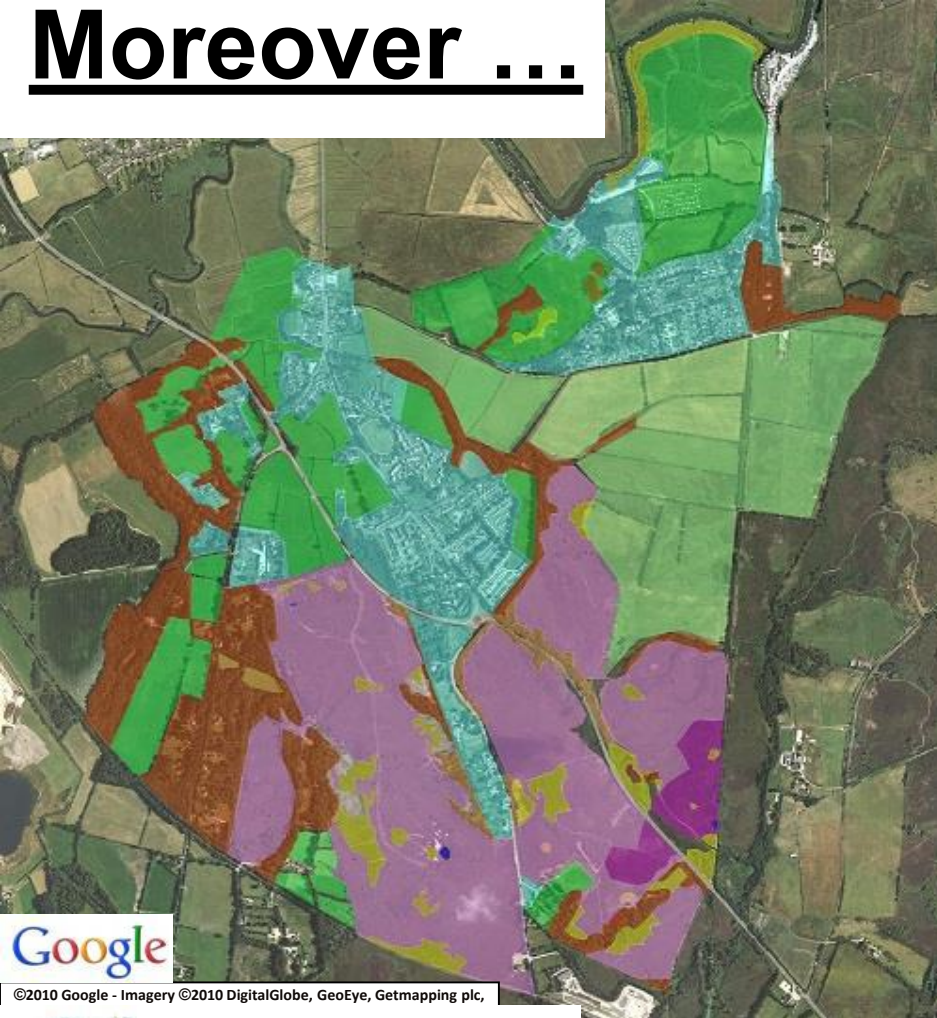
- 51°37'58.4" N, 02°16'04.4" W
- 51°37'58.7" N, 02°16'04.2" W
- 51°37'58.6" N, 02°16'04.1" W
- 51°37'58.7" N, 02°16'04.0" W
- 51°37'58.6" N, 02°16'03.7" W
- 51°37'58.3" N, 02°16'03.9" W

51°37'58.0" N, 02°16'04.4" W No GPS device Selected point 4 in object 3. Buildings Add, edit or delete mapped objects

Workshop for South America,
Lima, Peru, 26 October 2017.

Tanglewood Farm & Research Ltd

Moreover ...

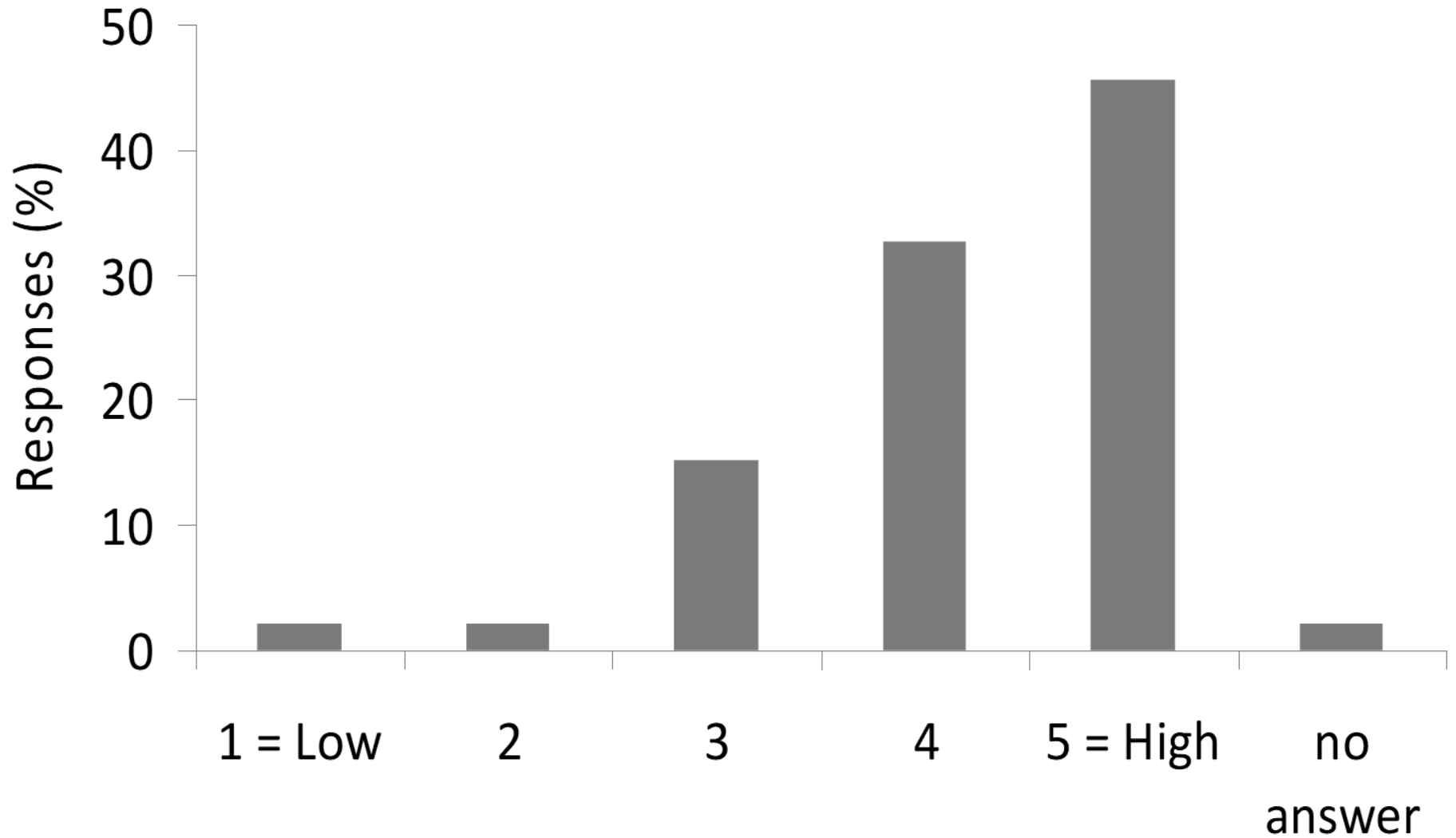


Scout Team and Post-doc Biologist

mapped deer habitats equally well; differences in habitat class (colour) could easily be resolved by training.

Post case-study helper survey

f. How likely would you be to do such a project again?



New idea: attract local government



Arne Parish

[Home](#) [About](#) [News](#) [Archive](#) [Contact Us](#) [Register](#)

[Calendar](#)

[Regular Events](#)

[Classifieds](#)

[Mapping](#)

[Services](#)

[Interests](#)

Arne Parish

Arne is a rural parish with a blend of both traditional and modern values. Arne has 1,370 citizens in settlements from Worgret in the west to Arne hamlet in the east and Furzebrook Road to the south, with most people in villages at Ridge & Stoborough. Apart from a small proportion of mudflat and water in the east, the 29km² of the Parish is about half used for farming with a fifth heathland and a fifth woodland.

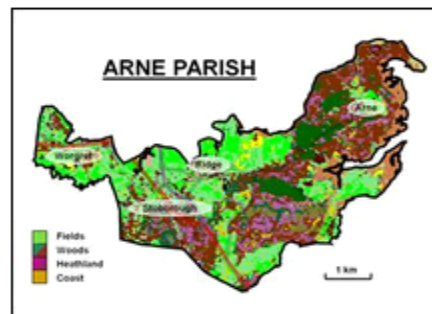
Major roads run west from Wareham towards Dorchester in the north of the parish, and south towards Swanage, with railway links also to these towns. The River Frome flows across the Parish through extensive water-meadows. The rich land-use makes Arne Parish an important part of the 10km square that has the most plant species in Britain, so nature conservation and tourism are important local interests, joining clay-mining in generating local jobs.

Arne Parish Survey and Plan

In 2010, Arne Parish Council asked all households to complete a survey for a Parish Plan, which was ready in 2011. The survey showed an increasing proportion of citizens working from home. It also set a European standard for community participation in mapping wildlife and habitats. *Please click on our [Parish Plan](#) to have a look.*

More about Arne Parish

Please visit the "About" page for more information on Arne Parish and the Parish Council, with records of Council meetings to be found in the "Archive". The "News"



To have a better look at the map (and any image on this site), please just click on it; use the back button (←) at the top left of your browser to return to the same page. Clicking a ***link in bold italics*** opens a pdf file in a separate window. Other links take you off-site in the same window but you can use the back button (←) to return to the same page.

News

03 Oct 2012 **Upgrading The Hayricks**

09 Jul 2012 **Rain and tide floods the Causeway**

07 Jul 2012 **Heavy summer rains**

[Read more](#)

The system has pages for easy local editing & pages edited nationally to guide/survey locals



East Stoke Community

[Home](#) [Village Hall](#) [News](#) [Downloads](#) [History](#) [Contact Us](#)

[Calendar](#)
[Regular Events](#)
[Classifieds](#)
[Routes](#)
[Gallery](#)
[Defra & State Agencies](#)
[Register](#)

East Stoke

Is a rural parish in a beautiful part of Dorset, straddling the wide flat valley of the River Frome, bisected by the main Weymouth-London railway and consisting of the settlements of East Stoke, Stokeford, Rushton, Highwood, Hethfelton, Binnegar, West Holme, Holmebridge and Woolbridge.



The village has a population of 439 (2001). The world famous [Monkey World Ape Rescue](#) is near the northern edge of the Parish. The [Freshwater Biological Association](#) runs a research centre on the banks of the River Frome, from which the [Game & Wildlife Conservation Trust](#) runs its research into atlantic salmon declines.

This is a community website so please [get in touch](#) with any ideas or feedback or if you run a local organisation and would like your own link!

Much useful information is contained elsewhere on this site, however it is hoped that the following notes, and hyperlinks below, will provide additional valuable information:

USEFUL LINKS



News

22 Apr 2014 **Five young people hurt as car flips over**

21 Apr 2014 **Interested in becoming a Parish Councillor for East Stoke?**

 Find us on
Facebook

It contains advanced facilities to map routes, points (e.g. species) & areas (e.g. of habitat)



Purbeck & District Riding Club

[Home](#) [About](#) [News](#) [Archive](#) [Register](#) [Contact Us](#)

[Calendar](#)
[Regular Events](#)
[Classifieds](#)
[Mapping](#)
[Gallery](#)
[Services](#)
[Organisations](#)

Mapped Routes

Browse the routes by clicking their links in the right hand column.

Hartland-Furzebrook Circuit

A 6 mile ride with about a third on small public roads and two possible stops for refreshment. It makes use of the Hartland Ride across open country managed by the National Trust and of bridleways through woodland, including the crucial link from Furzebrook Road to the Halfway Inn that was opened as a final contribution in the too-short life of Elaine Randall-Smith.

Distance: 9.5 km
Duration: 2 h with pitstops
Difficulty: Tricky in woodland

Managing the maps

The hand on the map can be used to move the map around, and turns to a finger at each way-marker to show information there, or can be used on the pointers at top to move the map and, below, to zoom magnification.

If a yellow person shows between the pointers and zoom-bar, the hand can drag them to to points on the map which may have been photographed by Google. In that case, a picture loads in the map frame and the hand can be used on the ring round the pointers to swing the camera to different views and even to zoom for a closer look.

More Routes

[Thrasher's Lane to Hartland Ride](#)



 Find us on
Facebook

A System for Community Liaison to:

- Map and advise removal of alien species;
- Monitor rare species and guide restoration;
- Support decisions for livelihoods & conservation;
- Encourage systematic fine-scale mapping;
- Ground-truth remote imaged maps;
- Run sensors and crowd-source data for early-warning (wildfires/flooding/wildlife disease/etc
- Grow a multi-lingual platform supporting management and recreation technologies.

Summary

- Detailed information for local management is poor; maps and decision support are desired.
- Local people are good at mapping and could exchange mapping for decision support.
- Without top-down support for an appropriate system, work continues to build bottom-up with funds from providing other internet services, for example to local councils and clubs.



**Thank you
for listening**

www.Naturalliance.eu

**Workshop for South America,
Lima, Peru, 26 October 2017.**

Tanglewood Farm & Research Ltd